

Multimedia Controller PRO v2 & Xpress

Good Ergonomics



Multimedia Controller Xpress - Box content

1. Multimedia Controller Xpress

Weight	0,14 kg
Dimensions	11 cm x 11 cm x 3 cm
OS	OSX, Windows
Plug-and-play	Driver needed



Function and Media Control Keys

- A. 5 adjustable buttons
- B. Jog Wheel
- C. Rubber Wheel

For additional setting features, please download our driver at:
contourdesign.com/support



Drivers

Windows 10	For Multimedia Controller PRO v2, Multimedia Controller Xpress and Multimedia Controller PRO
Windows 8	Requires Windows 10 or later
Windows 7	For Multimedia Controller PRO v2, Multimedia Controller Xpress and Multimedia Controller PRO
macOS	Requires OS X 10.8 or later Version



Connecting to a Computer

Plug the Multimedia Controller Express USB cable into the computer's USB port. Allow your computer a few seconds to automatically install.

To download drivers please visit contourdesign.com/support

Multimedia Controller PRO v2 - Box content

1. Multimedia Controller PRO v2

Weight	0,34 kg
Dimensions	20 cm x 11 cm x 3 cm
OS	OSX, Windows
Plug-and-play	Driver needed

Drivers

Windows 10	For Multimedia Controller PRO v2, Multimedia Controller Xpress and Multimedia Controller PRO
Windows 8	Requires Windows 10 or later
Windows 7	For Multimedia Controller PRO v2, Multimedia Controller Xpress and Multimedia Controller PRO
macOS	Requires OS X 10.8 or later Version

To download drivers please visit contourdesign.com/support



Function and Media Control Keys

- A. 15 adjustable buttons
- B. Jog Wheel
- C. Rubber Wheel

For additional setting features, please download our driver at: contourdesign.com/support

Connecting to a Computer

Plug the Multimedia Controller PRO v2 USB cable into the computer's USB port. Allow your computer a few seconds to automatically install.



Multimedia Controller Introduction

The Multimedia Controller is a macro hub that can be used in combination with your keyboard and mouse.

Using either stock or custom settings the Multimedia Controller emulates keyboard shortcuts which improves productivity in the office, studio, home, and more.

The Multimedia Controller PRO v2 is a universal tool that supports hundreds of applications and controls the application that is in focus.

Getting Started

Because the Multimedia Controller can be used with a variety of applications, the driver must be downloaded and installed before use. The driver can be downloaded from our support webpage: contourdesign.com/support.

Note to Windows users: After installing the Multimedia Controller driver, please make sure the Multimedia Controller icon is visible in the system tray (taskbar notification area) and not located in the hidden icons. This will allow you to tell which application is in focus for the Multimedia Controller to communicate with. Please see question 7 on page 11 for more details.

The official Contour Multimedia Controller forum is an online resource where Multimedia Controller users can share and download both user created and official Contour Multimedia Controller settings. Join the Multimedia Controller community: forums.contourdesign.com.

For further assistance with your Multimedia Controller please contact our support team at: info@contour-design.com

Creating New or Updated Settings

There are two main ways to create settings:

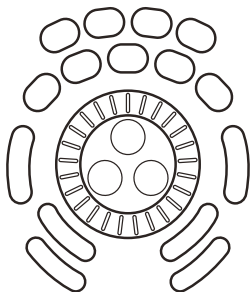
1. Create settings based on other settings. For example, if your media player has the same keystroke shortcuts as another application but doesn't have settings for the other application, new settings can be created off of the existing settings. This method can also be used to update settings to an application that has recently been updated.
2. New custom settings can also be created from scratch.

Windows Driver Outline

Application Settings

(Choose application to customize)

Options



User Action

(Choose button or wheel to modify)

Computer Response

[Input field]



Depending on the "Computer response" selected, different options will be available in this dialogue box.

Comment

[Input field]

OK Cancel Apply

Mac OS Driver Outline

	Button	Action	Comment
<p>Application Settings List (Choose application to customize)</p>			<p>Available responses:</p> <ul style="list-style-type: none"> - Do nothing - Same as Lower - Press Modifiers - Type Keystroke - Mouse Click - Mouse Wheel - Switch Settings - Macro
<p>Create New Settings</p> <p>Settings management tools</p> <p>+  Application search</p>			<p>Computer Response Depending on the "Computer response" selected, different options will be available in this dialogue box.</p>

Creating New Settings (Windows)

1. Copy Method:

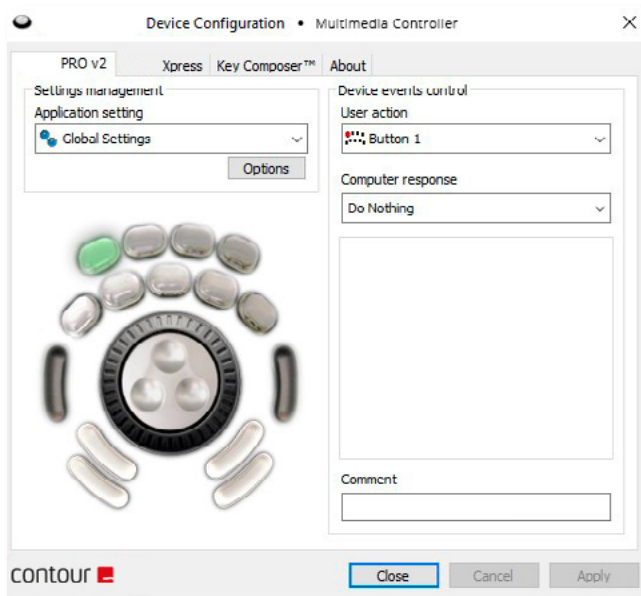
In the Multimedia Controller Device Configuration

Getting Started

- A. Highlight the settings to be copied in the application setting field.
- B. Click Options > Create New Settings > Copy contents from current settings.
- C. Choose the new program executable file in the file selector pop-up.

2. Custom Settings Method:

- D. Click options > Create New Settings > Create Empty Settings
- E. Choose the new program executable file in the file selector pop-up.



Creating New Settings (Mac)

1. Copy method:

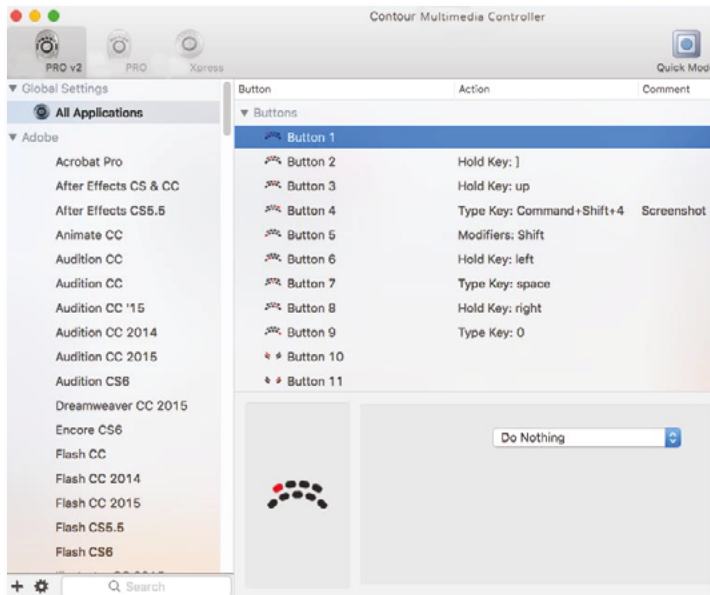
In the Multimedia Controller Device Configuration

Getting Started

- Select the settings to be copied in the applications list.
- Choose "Copy to new settings..." in the Tools menu (gear icon at the bottom).
- Select the application you want to create settings for in the file picker that pops up.

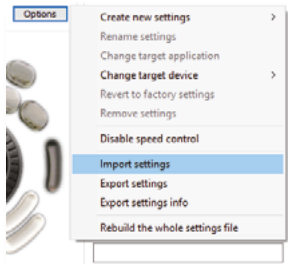
2. Custom Settings Method:

- Click the Tools menu (gear icon at the bottom)
- Choose "New Settings..."
- Select the application you want to create settings for in the file picker that pops up.



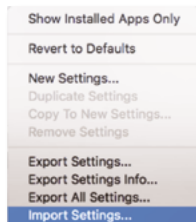
Importing Settings (Windows)

1. Download the file.
2. Unzip the file and take note of the file location.
3. Open the Contour Multimedia Controller Control Panel and click the Options button.
4. Choose Import Settings.
5. Navigate to the file location noted in Step 2.
6. Choose the settings file.
7. Click the Open button on the screen.
8. Click the Apply button on the screen (very important).



Importing Settings (Mac)

1. Download the file.
2. Unzip the file and take note of the file location.
3. Open the Contour Multimedia Controller app and click the Settings Management Tools button (Bottom-left corner of Multimedia Controller App window).
4. Choose Import Settings.
5. Navigate to the file location noted in Step 2.
6. Choose the settings file (settings file will have the .shuttleSettings tag, for example Final Cut Pro X.shuttleSettings).
7. Click the Open button on the screen.







Frequently Asked Questions

1. What computer systems does the Multimedia Controller work with?

The Multimedia Controller will work on both Windows and Mac. Unfortunately we do not officially support Linux. However some end users on our forum have created drivers and plugins that do support Linux. Please feel free to search our forums for Linux support at: forums.contourdesign.com.

2. I lost some of the button covers from my Multimedia Controller PRO v2. Can I order new ones?

You can call or email Contour Design, and we would be happy to send out some button covers to you, depending on the make of your Multimedia Controller . Please contact us at: info@contour-design.com for more info.

3. Where can I find button labels for my Multimedia Controller PRO v2?

You can download a PDF version of the

Multimedia Controller button labels from our website on the

Multimedia Controller PRO v2 product page: contour-design.co.uk/products/multimedia-controller.

4. What applications does the Multimedia Controller work with?

The Multimedia Controller will work with hundreds of applications and there are default settings for the majority of the popular applications. You can download a PDF list of the current settings we support from our website on the Multimedia Controller PRO v2 product page: contour-design.co.uk/products/multimedia-controller

If the application you are looking for is not on the list, there are 3 options available for you:

- 1.) There are user made settings available on our forum to search through: forums.contourdesign.com.

2.) You can create your own custom settings using the instructions on page 6 and 7.

3.) You can reach out to us at: info@contour-design.com, for help making custom settings.

5. Can the Multimedia Controller work with Android?

Currently no, our main focus is Windows and Mac OS.

6. Can you lock the Multimedia Controller to one application?

The Multimedia Controller will not lock to one application. It works by generating keystrokes that would be automatically directed toward the foreground application. This applies to both Windows and Mac OS.

7. Why can't I leave the Multimedia Controller icon with the hidden icons and what does the term "in focus" mean?

(Windows users only). The term "in focus" refers to which applications is in the foreground (active). The Multimedia Controller device works like a

keyboard and will respond to the program that is in the foreground (active).

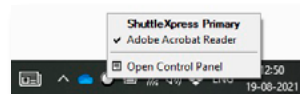
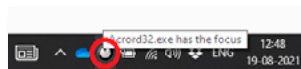
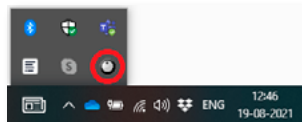
To use the Multimedia Controller on another application, you will need to click on the application before using the Multimedia Controller .Moving the Multimedia Controller icon to the taskbar notification area confirms which settings are being used for the application that is in focus. If you have more than one setting created for a specific application, this allows you to switch between settings.

Also, there are some applications that have more than one default setting available.

This will help prevent any confusion if you are changing the custom settings and not noticing the changes while using the Multimedia Controller .

To move the Multimedia Controller icon, simply click the up arrow on the taskbar, then drag the Multimedia Controller icon to any area on the taskbar notification area.

Once the Multimedia Controller icon is always visible, you will be able to see which application is in active by hovering the cursor over the Multimedia Controller icon. When you click the icon, the settings selected by the Multimedia Controller driver will be displayed with a check mark next to it.





Contour Design, Inc.

10 Industrial Drive
Windham, New Hampshire 03087, USA
Phone: (603) 893-4556
Email: ergoinfo@contourdesign.com

Contour Design Nordic A/S

Borupvang 5B, St.
DK-2750 Ballerup / Denmark
Phone: +45 32 46 11 20
Email: info@contour-design.com

For more information please visit:

www.contourdesign.com

Tested to comply with FCC
and IC standards

FCC Statement

Changes or modifications not expressly approved by the party responsible for compliance could void the user's authority to operate the equipment.

This equipment has been tested and found to comply with the limits for a Class B digital device, pursuant to Part 15 of the FCC Rules. These limits are designed to provide reasonable protection against harmful interference in a residential installation. This equipment generates uses and can radiate radio frequency energy and, if not installed and used in accordance with the instructions, may cause harmful interference to radio communications. However, there is no guarantee that interference will not occur in a particular installation. If this equipment does cause harmful interference to radio or television reception, which can be determined by turning the equipment off and on, the user is encouraged to try to correct the interference by one or more of the following measures:

- Reorient or relocate the receiving antenna.
- Increase the separation between the equipment and receiver.
- Connect the equipment into an outlet on a circuit different from that to which the receiver is connected.
- Consult the dealer or an experienced radio/TV technician for help.

This device complies with part 15 of the FCC rules. Operation is subject to the following two conditions (1) this device may not cause harmful interference, and (2) this device must accept any interference received, including interference that may cause undesired operation.

IC Statement

This device complies with Industry Canada's licence-exempt RSSs. Operation is subject to the following two conditions:

- (1) This device may not cause interference; and
 - (2) This device must accept any interference, including interference that may cause undesired operation of the device.
- The term "IC:" before the certification/registration number only signifies that the Industry Canada technical specifications were met. This product meets the applicable Industry Canada technical specifications.

Warranty

If there is a functional defect due to faulty manufacturing, we will replace the product. This warranty does not cover damage that results from misuse of the product.

Attention!

If you attempt to dismantle your "Unimouse,, you will invalidate your warranty.